

# GeniusConnect

Bridge between your database and Microsoft® Outlook®

## Technology

GeniusConnect is an Outlook Add-On and becomes an integral part of Outlook after installation.

## Pricing

for EU customers: VAT may apply		
<b>Private</b>	<b>1 user license</b>	\$49/Year
<b>Business</b>	<b>1 user license</b>	\$99/Year
<b>Multi user</b>	<b>25 users license</b>	\$329/Year
<b>Multi user</b>	<b>50 users license</b>	\$439/Year

## Software requirements

Microsoft® Outlook®  
2002/2003/2007/2010/2013/2016/2019/2021

## Supported folders

Calendar, Contacts, Mail, Tasks, Journal, Notes

## Supported databases

any database with ODBC support  
MS Access, MySQL, SQL Server, Oracle, DB2, Informix, SQLite, Sybase, FileMaker etc..

## Support

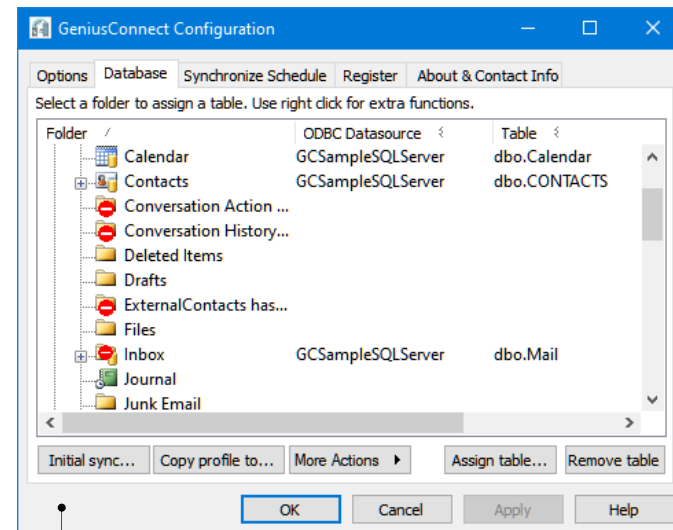
[www.geniusconnect.com/support-contacts](http://www.geniusconnect.com/support-contacts)  
[TechSupport@geniusconnect.com](mailto:TechSupport@geniusconnect.com)

**GeniusConnect** enables synchronization between Outlook folders and any SQL database with ODBC support.

A folder can be linked to a database table or view. You can use your own table structure and define conversions for columns with data type's that are not compatible with Outlook fields. It is possible to synchronize multiple folders and multiple databases.

## Supported synchronization directions

- *1 way: Outlook -> SQL database*
- *1 way: SQL Database -> Outlook*
- *2 way: Outlook <-> SQL database.*
- *2 way: with conflict resolution support*



## GeniusConnect

Improved efficiency while working in Outlook through immediate access to current database information.

Easy access to contact, calendar and customer information, stored in your database.

Create Tasks in Outlook based on events in your database.

Ability to quickly update and back-up information.

Offers complete flexibility by allow connectivity to any standard SQL Database.

2-way sync and attachment support

E: [info@geniusconnect.com](mailto:info@geniusconnect.com)  
[www.geniusconnect.com](http://www.geniusconnect.com)

